



AEROLEDs™

Installation Instructions SunBeam Series



AeroLEDs, LLC
8475 W. Elisa St.
Boise, ID, 83709
208-850-3294

NOTE: A printed copy of this document may not be the latest revision. It is the responsibility of the user to ensure that the latest revision is used. The latest revision of this document may be printed from the AeroLEDs electronic document repository. Revision history follows on page 2

This document contains proprietary information of AeroLEDs. Neither receipt nor possession thereof confer any right to reproduce or use, or disclose, in whole or in part, any such information without written permission from AeroLEDs.

Approval	Name	Intent	
Author	Jennifer Blanchfield	Installation and operation Instructions for the SunBeam series lights	
Check	Nate Calvin		
Quality	Mark McCormack		
Date:	14 June 2022		
Status: Released	Typed signatures indicate approval. Handwritten, or electronic signature approval of this document is on file at AeroLEDs, Boise, Idaho.	Document Number 0013-0014	Revision E

REVISION RECORD

Rev	Description	Date	Author
E	Update Logo, information, tables, drawings	06/14/2022	J. Blanchfield
D	Information update	07/30/2019	M. DeSpain
C	Updated formatting	07/30/2019	M. DeSpain
B	Information update	10/02/2018	R. Prew
A	Information update	10/07/2016	D. Wilkinson
IR	Original Version	04/02/2012	D. Wilkinson

TABLE OF CONTENTS

1	System Description	4
2	Model Numbers	4
2.1	Current consumption per input	4
3	Airworthiness Limitations	4
4	Instructions for Continued Airworthiness	5
4.1	Installation	5
4.2	Installation Procedures	5
4.3	Troubleshooting	6
5	Diagrams	7
5.1	Mounting	7
5.2	Wiring	8

1 System Description

SunBeam™ LED aircraft light is manufactured under FAA-PMA standards in a rectangular format to fit a variety of experimental aircraft and LSAs. It features integrated Pulse or “WigWag”, significantly increasing recognition in broad daylight as well as night operations to help avoid midair collisions and bird strikes while drawing half the current.

2 Model Numbers

Model	Part Number	Description	Voltage (V)	Current (Amps)	Power (W)	Weight (oz)
SunBeam	90-1000-12	Landing	14	2.7	38	8.8
	90-1000-24	Landing	28	1.4		

Table 1

2.1 Current consumption per input

Model	Part Number	Modes	Inputs				
			RED	BLK	YLW	BLU	GRN
			14VDC*				
SunBeam	90-1000-12	Landing Only	2.7A	2.7A	NA		
		Pulse Mode	NA		2.7A	≤10mA	
			28VDC*				
SunBeam	90-1000-24	Landing Only	1.4A	1.4A	NA		
		Pulse Mode	NA		1.4A	≤10mA	

*Nominal

3 Airworthiness Limitations

The Airworthiness Limitations section is FAA approved and specifies maintenance required under **14 CFR, §43.16** and **14 CFR, §91.403** of the Federal Aviation Regulations unless an alternative program has been FAA approved. There are no additional airworthiness limitations.

4 Instructions for Continued Airworthiness

SunBeam LED light assembly contains no user serviceable items. Should any LED fail, unit must be replaced.

Interval	Inspection	Remedy	Notes
Pre-Flight	<ul style="list-style-type: none"> Perform a functional check and observe that all LEDs are illuminated 	<ul style="list-style-type: none"> If all LEDs are not illuminated replace light as soon as is practicable 	<ul style="list-style-type: none"> Lights are not use serviceable. Lights are very bright and to reduce eye strain during inspection use an optical filter such as dark glasses or welding goggles.
Annually, unless the OEM specifies a shorter interval	<ul style="list-style-type: none"> Perform a functional check and observe that all LEDs are illuminated Check mounting, connections, and wire integrity 	<ul style="list-style-type: none"> If all LEDs are not illuminated, the light must be replaced Adjust or replace wiring, and connectors as required 	

Table 2

4.1 Installation

Consult **14CFR, §43.13-1B** for guidance on acceptable methods, techniques, and practices. Light mounts into existing holes on aircraft(see mounting diagram). For retrofit installation, existing circuit breaker or fuse may typically be used. Procedures contained herein are not intended to conflict with procedures set forth by aircraft OEM, nor do they supersede FAA approved manuals and FAA regulations.

4.2 Installation Procedures

- Reference the airframe manufacturer's maintenance manual to complete the following steps
- If the AeroLEDs light(s) chosen for installation are higher wattage than the light(s) being removed, ensure the Electrical Load is not appreciably affected and ensure that all circuit components (circuit breaker, wire, switches, relays, etc., as applicable) are appropriate for the light(s) being installed
- Prepare aircraft for maintenance:
 - Disconnect aircraft power and ground
 - Ensure all switches are in the OFF position
 - Attach maintenance warning tags
 - Pull landing/taxi light circuit breakers
 - Remove light covers to gain access to lamp assembly(s) and bracket(s)
 - Remove existing lamp(s) from brackets, mark and retain hardware
 - Record weight of removed lamps
- This installation procedure is for single or multiple light installations. Wiring diagrams are provided for single and dual light installations.
- Built in pulse function**, is a self-contained feature and does not require use of external control circuitry. An additional wire and switch will be required to enable pulse mode. If pulse mode is not required, cap and stow yellow wire.
- Refer to aircraft manufacturer's service manual and/or illustrated parts catalog to identify landing and/or taxi light system installed in your aircraft. This will provide information on location of components and assembly details

7. Mount LED light with a minimum 4-inch clearance to exhaust system components unless adequate heat shielding is utilized to block radiant heat.
 8. Reference airframe manufacturer's current maintenance manual and install LED light(s) in brackets using retained hardware
 9. Install suitable aircraft approved connectors or splices to connect landing light assemblies to wires routed from switch in accordance with wiring diagram(s).
- a. Yellow wire is used to enable pulse mode
 - b. Blue and green wires are low current signals for synchronization in multiple light installations
 - c. Install an appropriate aircraft approved switch and circuit breaker of correct rating for lights installed for pulse function. Original landing light switch/switches may be used.
10. Placard switches appropriately.
 11. Verify proper operation of LED light(s), in both pulsing and steady functions (as appropriate to installation)
 12. Using appropriate aircraft maintenance manual, verify light angle has not changed, and is oriented & aimed in accordance with manufacturer's instructions
 13. Reinstall associated light hardware IAW aircraft maintenance manual
 14. Perform an operational check of the light(s) to determine that the installed light(s):
 - a. Generate no objectionable glare to the pilot
 - b. Do not adversely affect the pilot by halation
 - c. Provide enough light for night operations, including hovering and landing
 - d. Will not adversely affect any installed systems or equipment with EMI/RFI interference
 15. Record installation with appropriate logbook entry

Note: The use of shielded cable is recommended although not required for installation.

It is recommended that ground connections for all lights be made at a single location on aircraft central ground bus. This "single point ground" scheme helps to eliminate ground loops and ground bounce that can occur when using airframe as a ground.

4.3 Troubleshooting

If light is not functioning properly, not fully powering up, or not staying powered on, try the following steps to correct problem:

- a. Check for proper voltage at power input wire to light
- b. Ensure light is adequately grounded
- c. Check for continuity in wiring and connections
- d. If wiring is verified, remove light and bench-check with appropriately sized power supply

If above actions do not correct problem, contact AeroLEDs tech support at 1-208-850-3294 for a resolution.

5 Diagrams

5.1 Mounting

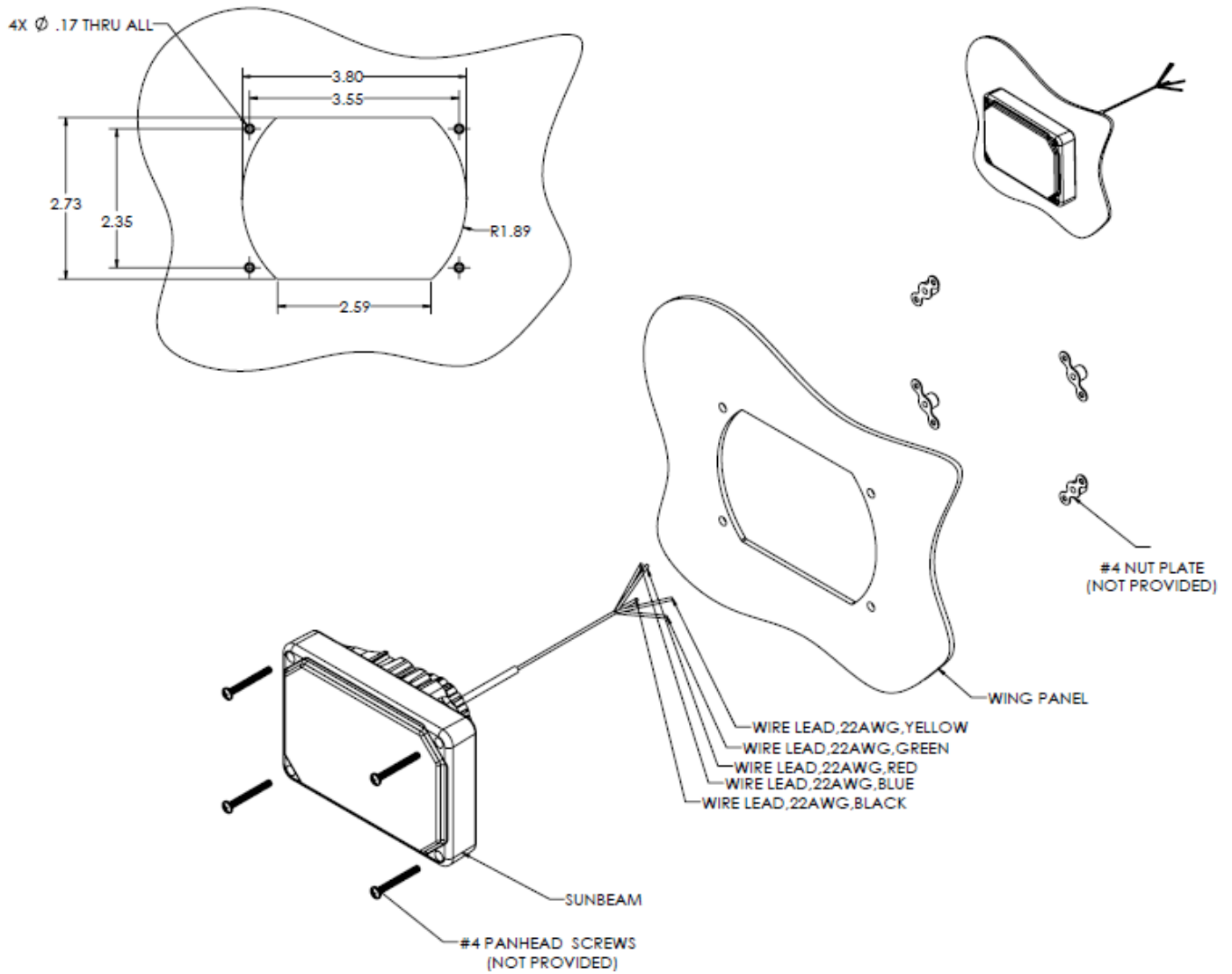


Figure 1

5.2 Wiring

5.2.1 Single Light

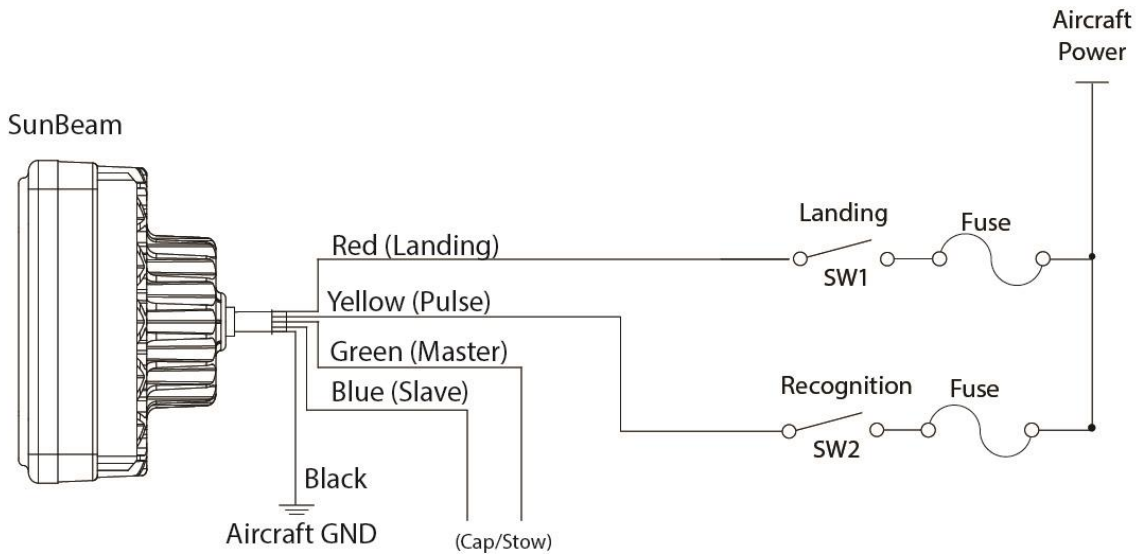


Figure 2

5.2.2 Two Lights

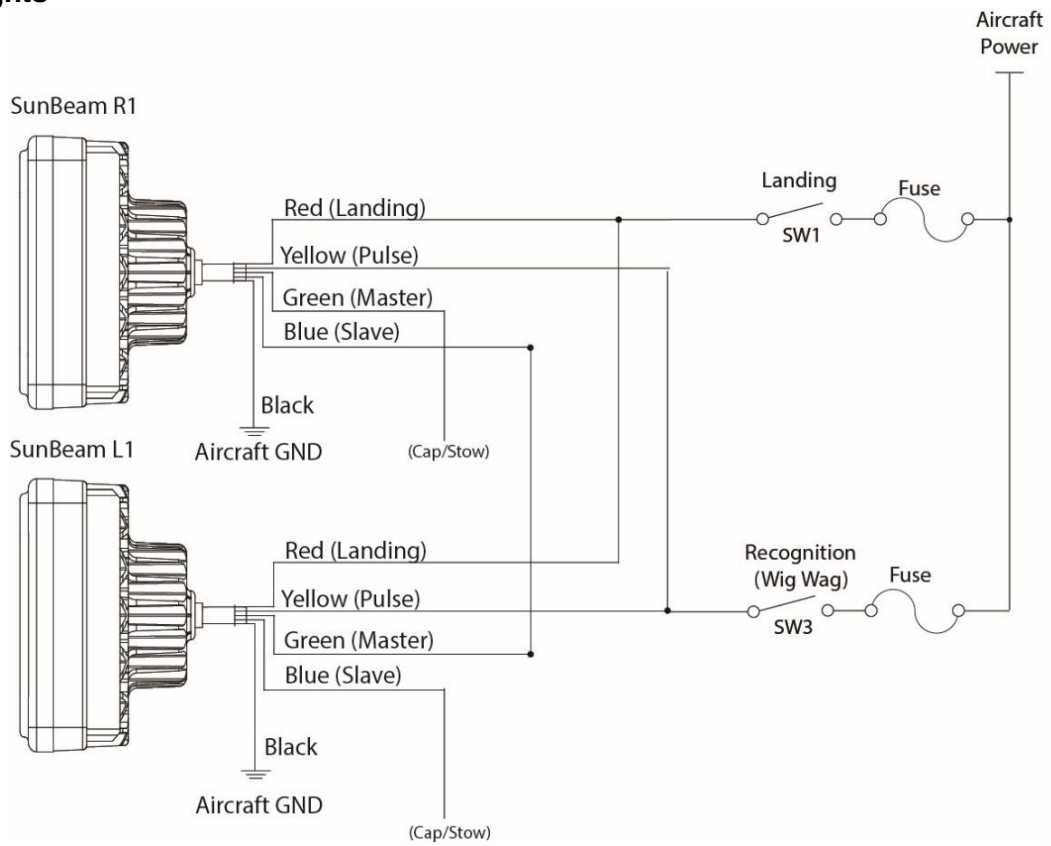


Figure 3

If lights are installed in proximity (within two feet), install using an AeroLEDs sync circuit

- AeroLEDs part number 00-8120
- Installation Guide 0017-0002

5.2.3 Four Lights

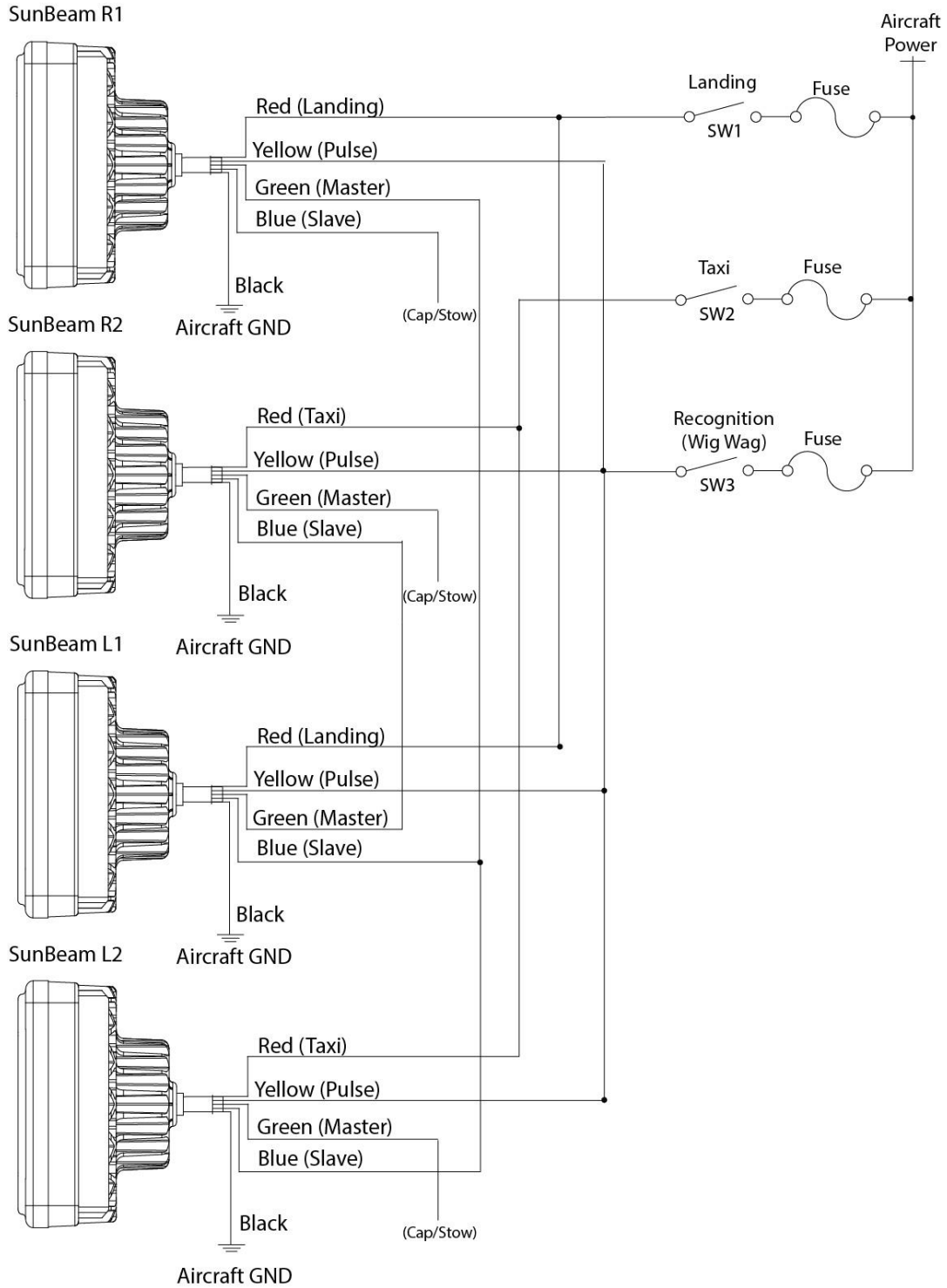


Figure 4