



# ARTEX C406-1 Series

## Single Output 406 MHz Emergency Locator Transmitter (Type AF ELT) Cospas/Sarsat Approved, FAA TSO C126 Approved, JTSO-2C126 Approved

The Artex **C406-1** is a single output ELT; unlike previous models of Artex 406 MHz ELT's. All 3 emergency frequencies (121.5/243.0 and 406 MHz) utilize the same RF output, which requires only 1 coax cable to connect to the new series of Artex single input antennas. The ELT automatically activates during a crash and transmits the standard swept tone on 121.5 and 243.0 MHz. Every 50 seconds for 520 milliseconds (long message protocol) the 406.025 MHz transmitter turns on and transmits an encoded digital message to the Cospas/Sarsat satellite system. The ELT can be programmed with the aircraft's 24-bit address as well as latitude/longitude information from the aircraft navigation system when used with the Artex ELT/NAV Interface (P/N 453-6500). Also available is the Artex **C406-1HM**, which is equipped with a 6 axis "G" Switch for helicopter installations. The mounting hardware for the **C406-1** Series is compatible with all previous versions of Artex 406 MHz ELT's.

### SPECIFICATIONS:

#### Operating Frequencies:

406.025 MHz  $\pm$  2 kHz Biphase L (16K0G1D)

121.5 & 243.0 MHz  $\pm$  0.005% (A3X)

#### Output Power:

406 MHz: 5 W  $\pm$  2 dB (520 ms / 50 sec)

for 24 hours @ -20° C

121.5/243.0 MHz: 100 mW min (+20 dBm)

for 50 hours @ -20° C)

#### Output connector:

BNC Female

#### Activation:

Automatic by 4.5 ft/sec G-Switch or Manual

#### Battery:

5 year Lithium (LiMnO<sub>2</sub>, solid cathode)

#### Temperature

Operating: -20° C to +55° C

Storage: -55° C to +85° C

#### Self Test:

G-Switch enabled

406 MHz Power

Antenna/Coax Connection

Position Data Present

Low Battery

### Remote Control:

ON/OFF/RESET

### Antenna:

Rod (110-338) (<450 KTS)

Whip (110-343) (<300 KTS)

Blade (110-340) (<600 KTS)

### Mounting Hardware:

Mounting Tray P/N 452-5050

Protective Top Cover P/N 452-3052

End Cap P/N 452-5052

### Other Parts:

Coax cable

Buzzer (to alert ground crews of accidental activation)

### Weights:

ELT Transmitter: 3 LB 5.8 oz Max (1.53 Kg)

Mounting Tray: 7 oz (200 g)

Protective Top Cover: 6.7 oz (190 g)

End Cap: 3.8 oz (108 g)

Total Weight: 2.02 Kg

### Measurements:

ELT Transmitter with Mounting Hardware Installed:

11.74" (298mm) L x 3.90" (99mm) H x 3.82" (97mm) W

### Part Numbers:

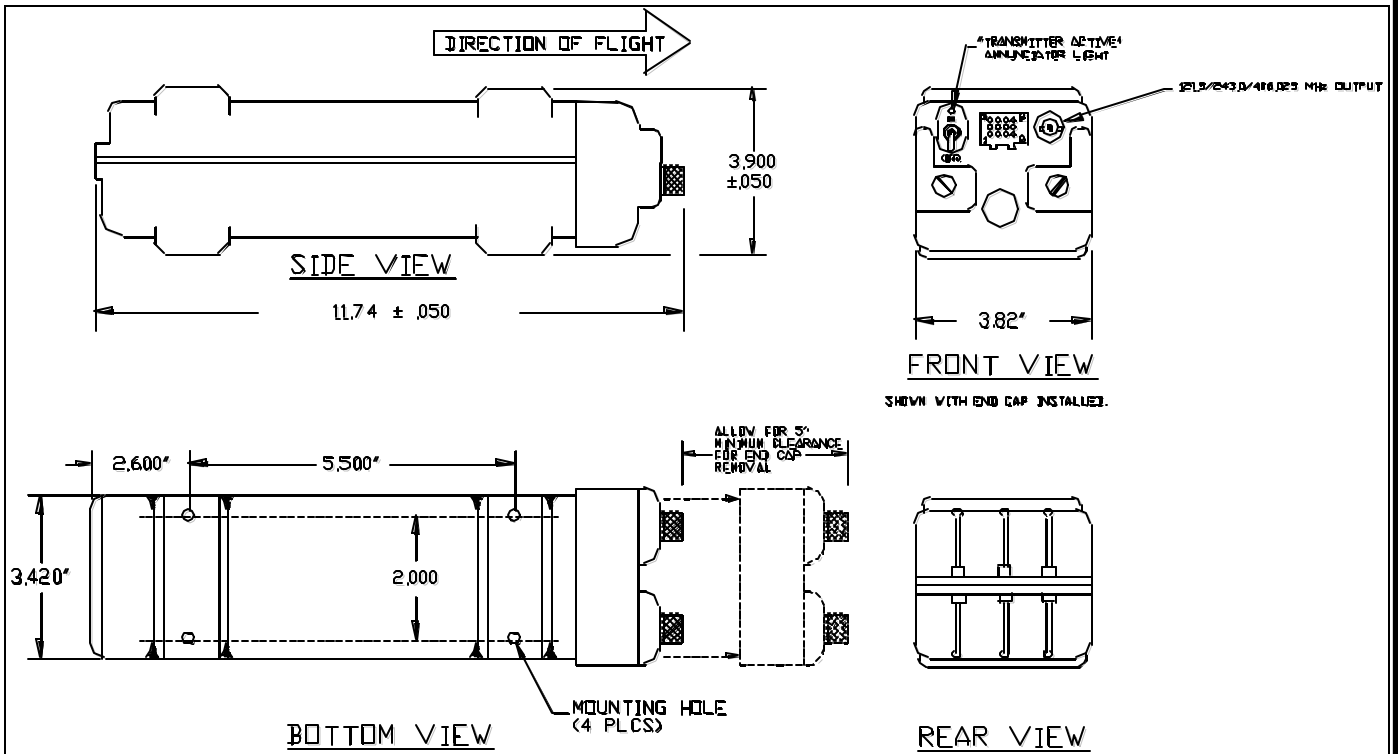
C406-1: 453-5002 (Transmitter Only)

C406-1HM: 453-5003 (Transmitter Only)

*Artex reserves the right to alter or modify any of the above specifications*



C406-1 System



ELT OUTLINE DRAWING