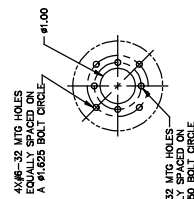
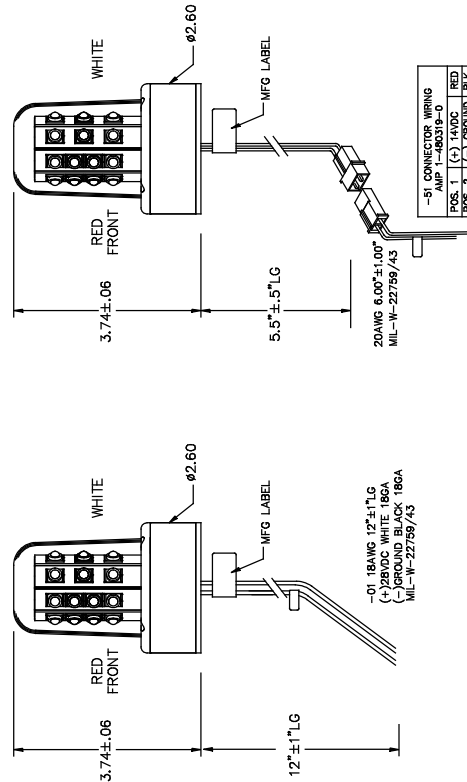


REV	ECN	DESCRIPTION	DATE
A	39448	SEE SHEET 4 & 5	12/1/98



SUGGESTED MOUNTING PATTERN

- NOTES:
- SPECIFICATIONS:  
 14VDC NOMINAL  
 INPUT VOLTAGE: 1.34 AMPS AVERAGE  
 INPUT CURRENT: 300VAC NOMINAL  
 INPUT VOLTAGE: 0.67 AMPS AVERAGE  
 INPUT CURRENT: 3.0 AMPS PULSE @ 3 SECONDS  
 LED COLOR: AVIATION WHITE (REAR)  
 LED COLOR: AVIATION WHITE (REAR)  
 FLASH RATE: 45-65 PER MIN.  
 MATERIAL: POLYCARBONATE (CLEAR)  
 LENS: 6061-T6 ALUMINUM CLEAR IRIDITE  
 LENS RETAINER: 6061-T6 ALUMINUM CLEAR IRIDITE  
 LENS: POLYCARBONATE (CLEAR) IRRODDED
  - UNITS MEET THE MINIMUM REQUIREMENTS STATED IN FAR PARTS  
 2017A IS USED IN THE DRAWING  
 FOR ANTI-COLLISION LIGHT SYSTEMS.  
 REF. WHELEN INSTALLATION GUIDE.
  - UNIT DESIGN TO MEET THE FOLLOWING ENVIRONMENTAL  
 TEMPERATURE RANGE: SECT. 4, CAT. D2  
 TEMPERATURE VARIATION: SECT. 4, CAT. D2  
 HUMIDITY: SECT. 7, CAT. A  
 VIBRATION: SECT. 6, CAT. U2, CURVES F, F1  
 EXPLOSIONPROOF: SECT. 5, CAT. H E1  
 WATERPROOFNESS: SECT. 10, CAT. 5  
 POWER INPUT: SECT. 16, CAT. Z  
 VOLTAGE SPIKE: SECT. 17, CAT. B  
 RADIATED AND CONDUCTED EMISSIONS: SECT. 21, CAT. H  
 IONIZING: SECT. 21, CAT. A  
 FIRE, FLAMMABILITY: SECT. 26, CAT. C
  - TEST PER ATP 08517



1	-	01-0590519-51	MODEL 9052051 FINAL ASSY (14V)
-	1	01-0590519-01	MODEL 9052001 FINAL ASSY (28V)
	*	01-0790520-51	MODEL 9052051 14V LED SPLIT A/C
	*	01-0790520-01	MODEL 9052001 28V LED SPLIT A/C

THIS DRAWING IS NON-PATENTING. THE RIGHTS IN ANY PATENT, TRADEMARK, OR SERVICE MARK WHICH MAY BE CLAIMED IN THIS DRAWING ARE RESERVED BY THE MANUFACTURER.

DATE	REV.	BY	CHKD.	DATE
12/1/98				

MODEL 90520 ( )  
LED ANTI COLLISION  
LIGHT SPLIT RED/WHITE

REV	DATE	BY
1	12/1/98	

90520 1A - 2 6