



SERVICE PARTS LIST

BULLETIN NO.
54-47-2565

| | | | |
|--|----------------|--|-------------|
| SPECIFY CATALOG NO. AND SERIAL NO. WHEN ORDERING PARTS | | REVISED BULLETIN | DATE |
| M12™ FUEL 3/8" HIGH SPEED RATCHET | | | Oct. 2020 |
| CATALOG NO. | 2567-20 | SERIAL NUMBER | L83A |
| | | WIRING INSTRUCTION See Pages 2 and 3 | |

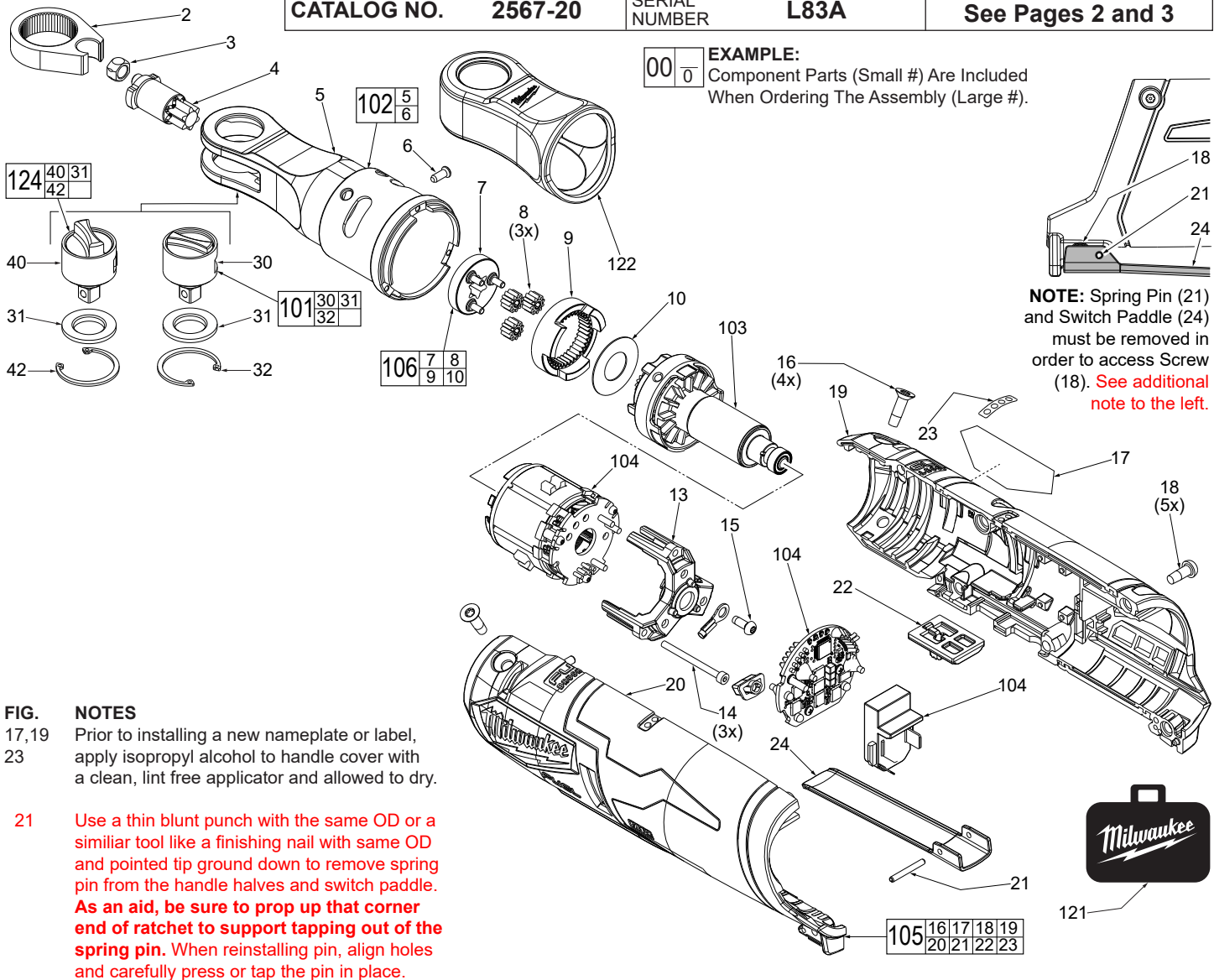


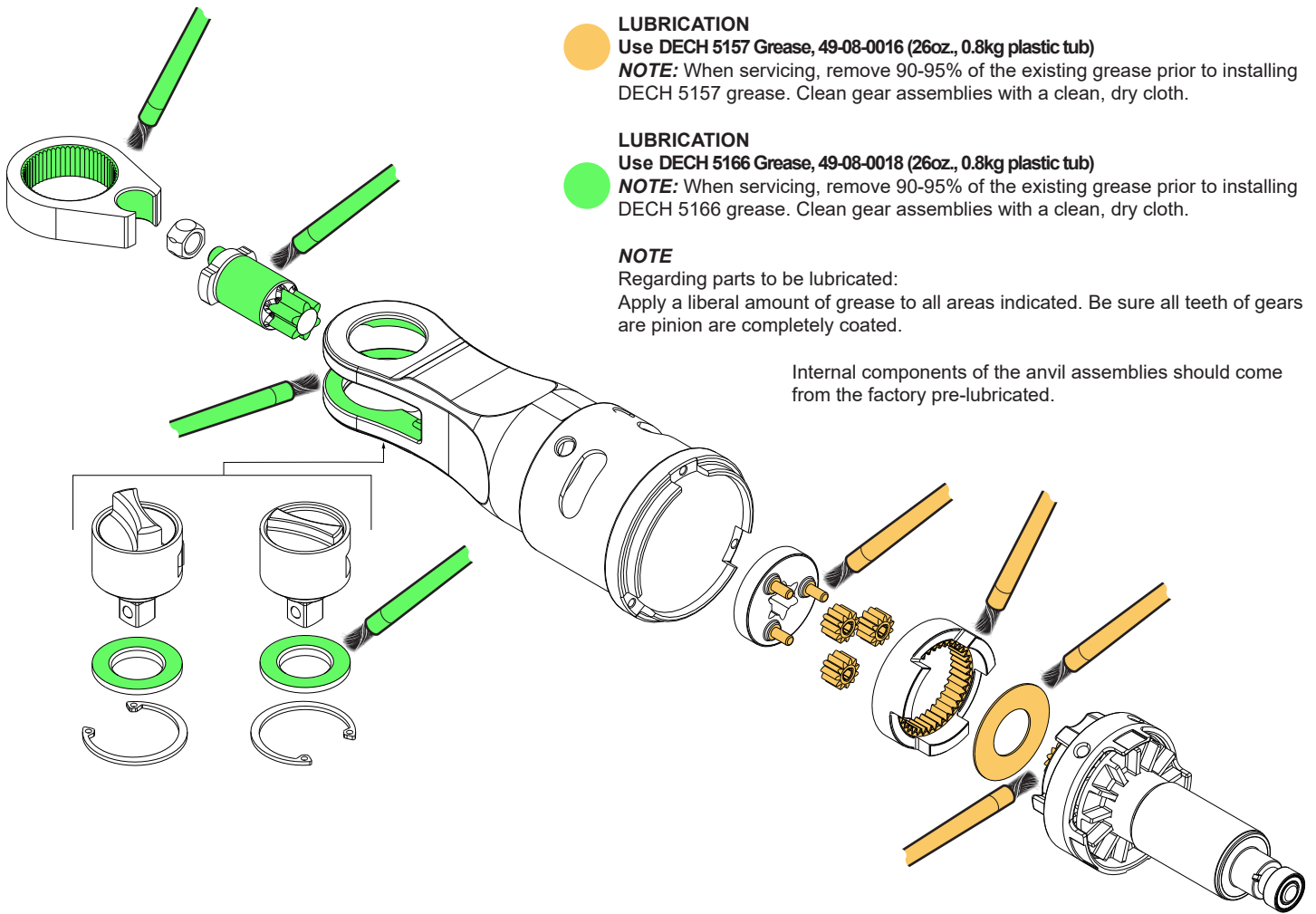
FIG. NOTES

17,19
23 Prior to installing a new nameplate or label, apply isopropyl alcohol to handle cover with a clean, lint free applicator and allowed to dry.

21 Use a thin blunt punch with the same OD or a similar tool like a finishing nail with same OD and pointed tip ground down to remove spring pin from the handle halves and switch paddle. **As an aid, be sure to prop up that corner end of ratchet to support tapping out of the spring pin.** When reinstalling pin, align holes and carefully press or tap the pin in place.

| FIG. | PART NO. | DESCRIPTION OF PART | NO. REQ. |
|------|-------------|--------------------------------------|----------|
| 2 | 45-98-0020 | Yoke | (1) |
| 3 | 42-40-0017 | Bushing | (1) |
| 4 | 36-17-0111 | Crankshaft | (1) |
| 5 | ----- | Yoke Housing with Needle Bearings | (1) |
| 6 | 44-60-0890 | Drive Pin | (1) |
| 7 | ----- | Carrier | (1) |
| 8 | ----- | Planetary Gears | (3) |
| 9 | ----- | Ring Gear | (1) |
| 10 | ----- | Washer | (1) |
| 13 | 44-66-1006 | Motor Plate | (1) |
| 14 | 05-84-0205 | M2.5 x 31mm Skt. Hd. Hex Drive Screw | (3) |
| 15 | 006-82-2310 | M3 x 8mm Pan Hd. Taptite T-10 Screw | (1) |
| 16 | 05-81-0594 | M4 x 14mm Flat Hd. ST T-20 Screw | (4) |
| 17 | 12-20-2513 | Service Nameplate | (1) |
| 18 | 05-71-0017 | M4 x 10mm Pan Hd. ST T-20 Screw | (5) |
| 19 | ----- | Right Housing Halve - Cover | (1) |
| 20 | ----- | Left Housing Halve - Support | (1) |
| 21 | 44-60-0575 | Spring Pin | (1) |
| 22 | 42-42-0119 | Switch Lock-Out | (1) |
| 23 | 10-20-4419 | Fuel Gauge Label | (1) |
| 24 | 44-10-0740 | Switch Paddle | (1) |
| 30 | ----- | 3/8" Anvil w/ Standard Shift Knob | (1) |
| 31 | ----- | Friction Plate | (1) |

| FIG. | PART NO. | DESCRIPTION OF PART | NO. REQ. |
|------|------------|---|----------|
| 32 | ----- | Retaining Ring | (1) |
| 40 | ----- | 3/8" Anvil w/ Tall Shift Knob (Optional) | (1) |
| 42 | ----- | Retaining Ring | (1) |
| 101 | 42-06-0138 | 3/8" Anvil Service Kit-Standard | (1) |
| 102 | 14-46-2560 | Yoke Housing Service Kit | (1) |
| 103 | 16-01-2560 | Rotor Service Assembly | (1) |
| 104 | 14-20-2560 | Electronics Service Assembly | (1) |
| 105 | 31-44-2560 | Housing Service Kit | (1) |
| 106 | 28-23-2500 | Gear Set Service Kit | (1) |
| 121 | 42-55-2561 | Contractor Bag (Optional, Accessory) | (1) |
| 122 | 49-16-2567 | Rubber Boot (Optional, Accessory) | (1) |
| 124 | 49-06-2567 | 3/8" Anvil Service Kit-Tall (Optional, Accy.) | (1) |



LUBRICATION

Use DECH 5157 Grease, 49-08-0016 (26oz., 0.8kg plastic tub)

NOTE: When servicing, remove 90-95% of the existing grease prior to installing DECH 5157 grease. Clean gear assemblies with a clean, dry cloth.



LUBRICATION

Use DECH 5166 Grease, 49-08-0018 (26oz., 0.8kg plastic tub)

NOTE: When servicing, remove 90-95% of the existing grease prior to installing DECH 5166 grease. Clean gear assemblies with a clean, dry cloth.

NOTE

Regarding parts to be lubricated:

Apply a liberal amount of grease to all areas indicated. Be sure all teeth of gears are completely coated.

Internal components of the anvil assemblies should come from the factory pre-lubricated.

| SCREW TORQUE SPECIFICATIONS | | | | |
|-----------------------------|------------|-------------------------|-------------|----------|
| FIG. | PART NO. | WHERE USED | SEAT TORQUE | |
| | | | (KG/CM) | (IN/LBS) |
| 14 | 05-84-0205 | Motor Plate | 5-7 | 4-6 |
| 15 | 06-82-2310 | HV Terminal/Motor Plate | 12-14 | 10-12 |
| 16 | 05-81-0594 | Housing Cover | 14-16 | 12-14 |
| 18 | 05-71-0017 | Housing Cover/Support | 10-12 | 8-10 |

