

United States of America  
Department of Transportation — Federal Aviation Administration  
**Supplemental Type Certificate**

*Number* SA5924NM

*This certificate, issued to* Electronics International, Inc.

*certifies that the change in the type design for the following product with the limitations and conditions therefor as specified hereon meets the airworthiness requirements of Part \* of the \* Regulations.*

*Original Product — Type Certificate Number:* \* See attached FAA Approved Model List (AML)  
*Make:* \* No. SA5924NM for list of approved airplane  
*Model:* \* models and applicable regulations.

*Description of Type Design Change:* Electronics International RPM instrument manufactured and installed in accordance with the drawings and installation instructions specified on the FAA Approved Model List (AML) of this STC, or later FAA approved revisions.

*Limitations and Conditions:* Approval of this change in type design applies to the above model aircraft only. This approval should not be extended to other aircraft of this model on which other previously approved modifications are incorporated unless it is determined that the relationship between this change and any of those other previously approved modifications, including changes in type design, will introduce no adverse effect upon the airworthiness of that aircraft. A copy of this certificate and FAA Approved Model List (AML) No. SA5924NM, dated February 17, 1993, or later FAA approved revision, must be maintained as part of the permanent records for the modified aircraft.

*This certificate and the supporting data which is the basis for approval shall remain in effect until surrendered, suspended, revoked, or a termination date is otherwise established by the Administrator of the Federal Aviation Administration.*

*Date of application:* November 10, 1992

*Date issued:*

*Date of issuance:* February 17, 1993

*Date amended:*



*By direction of the Administrator*

*Donald J. May*  
(Signature)  
Acting Manager, Special Certification Branch  
Seattle Aircraft Certification Office

(Title)

Any alteration of this certificate is punishable by a fine of not exceeding \$1,000, or imprisonment not exceeding 3 years, or both.

This certificate may be transferred in accordance with FAR 21.47.

FAA Approved Model List (AML) SA5924NM  
for  
Electronics International RPM Instrument

Issue Date: February 17, 1993

Item	Aircraft Make	Aircraft Model	Original Type Certificate Number	Cert. Basis for Alt.	FAA Sealed Drawings		Installation Instructions		E.I. Instrument Model Number (See Note 1) ( ) = See Note	AML Amended Date
					Number	Rev No.	Number	Rev. No.		
----	-----	-----	-----	-----	TD0326921	A	OI 0517911	C	-----	-----
1.	Aeronca Inc. (Also see American and Bellanca)	50-LA 65-LA, LB 15AC, S15AC	A-702 A-702 A-802	Car 4a " " Car 3	" " "	" " "	" " "	" " "	R-1-4-G30R230 R-1-4-G30R255 R-1-4-G30R270	6/3/94 " "
2.	Aerospatiale	See Socata.	-----	-----	-----	---	-----	-----	-----	6/3/94
3.	American Blimp	A-60, A-60+	AS1NM	FAR 21	"	"	"	"	R-1-4-G30Y260R300	10/30/97
4.	American Champion (Also see Aeronca and Bellanca)	7AC, S7AC 7BCM, 7DC, S7DC 7CCM, S7CCM, 7JC, 7EC, S7EC, S7CF S7GC, 7HC 7GCA, 7GCB, 7KC, 7GCBA, 7GCAA 7GCBC, 7KCAB 7ECA 8KCAB 8GCBC 11AC, S11AC 11BC, S11BC 11C, S11C	A-759 " " " " " " A21CE " A-761 " A-796	CAR 4 " " " " " FAR 21 Far 23 " CAR 4a CAR 4a Car 3	" " " " " " " " " " " " "	" " " " " " " " " " " " "	" " " " " " " " " " " " "	" " " " " " " " " " " " "	R-1-4-G30R2300 R-1-4-G30R257 R-1-4-G30R247 R-1-4-G30Y260R280 R-1-4-G30R270 R-1-4-G30R270 R-1-4-G30R275 R-1-4-G30Y255R270 R-1-4-G30Y240R270 R-1-4-G30R230 R-1-4-G30R2575 R-1-4-G30R2575	6/3/94 " " " " " " 10/30/97 " " " " "
5.	Aviat Inc. (Pitts)	A-1 S-1S S-1T S-2 S-2A S-2S, -2B	A22NM A8SO " " " "	FAR 23 FAR 21 " " " "	" " " " " "	" " " " " "	" " " " " "	" " " " " "	R-1-4-G30R270 R-1-4-G30R270 R-1-4-G30Y200G236R270 R-1-4-G30Y215G236R270 R-1-4-G30Y200G236R270 R-1-6-G30R270	6/3/94 " " " " "



FAA Approved Model List (AML) SA5924NM  
for  
Electronics International RPM Instrument

Issue Date: February 17, 1993

Item	Aircraft Make	Aircraft Model	Original Type Certificate Number	Cert. Basis for Alt.	FAA Sealed Drawings		Installation Instructions		E.I. Instrument Model Number (See Note 1) ( ) = See Note	AML Amended Date
					Number	Rev No.	Number	Rev. No.		
----	-----	-----	-----	-----	TD0326921	A	OI 0517911	C	-----	-----
7.	Bellanca Aircraft Corporation (Also, see American Champion)	14-19 17-30 17-31 17-31TC 17-30A 17-31A 17-31ATC	1A3 " " " A18CE " "	Car 3 " " " FAR 23 " "	" " " " " "	" " " " " "	" " " " " "	" " " " " "	R-1-6-G30R255 R-1-6-G30R270 R-1-6-G30R257 R-1-6-G30Y240R257 R-1-6-G30R270 R-1-6-G30R270 R-1-6-G30R2575	6/3/94 " " " " " "
8.	Boeing Aircraft	A 75 J1 (Stearman) IB75A	A-743 "	CAR 4a "	" "	" "	" "	" "	R-1-7-G30R200 R-1-9-G30Y195R230	10/30/97 "





FAA Approved Model List (AML) SA5924NM  
for  
Electronics International RPM Instrument

Issue Date: February 17, 1993

Item	Aircraft Make	Aircraft Model	Original Type Certificate Number	Cert. Basis for Alt.	FAA Sealed Drawings		Installation Instructions		E.I. Instrument Model Number (See Note 1) ( ) = See Note	AML Amended Date
					Number	Rev No.	Number	Rev. No.		
----	-----	-----	-----	-----	TD0326921	A	OI 0517911	C	-----	-----
11.	DeHavilland Aircraft of Canada, Ltd.	DHC-2 DHC-3	A-806 A-815	CAR 10 CAR 10	" "	" "	" "	" "	R-1-6-G30Y200R220 R-1-6-G30Y200R220	6/3/94 6/3/94
12.	Extra Flugzeugbau	EA 300, -S	A67EU	FAR 23	"	"	"	"	R-1-6-G30Y240R270	10/30/97
13.	Fairchild	24 C8C 24 R9	A-535 A-706	Bul 7a Car 4a	" "	" "	" "	" "	R-1-8-G30R205 R-1-6-G30R245	10/30/97 "
14.	Grumman	F8F-2 AF-2S w/R-2800-48	AR-32 AR-36	CAR 8 "	" "	" "	" "	" "	R-1-18-G30R260 R-1-18-G30Y260R280	10/30/97 "
15.	Gulfstream American Corp. (Grumman Aircraft)	AA-5, -5A, -5B AA-1, -1A, -1B AA-1C	A16EA " "	FAR 23 " "	" " "	" " "	" " "	" " "	R-1-4-G30R2700 R-1-4-G30R2600 R-1-4-G30R2700	6/3/94 " "
16.	Helio Aircraft (Taylorcraft)	15A 20 w/O-470-A 20 w/O-470-J	3A3 " "	CAR 4a " "	" " "	" " "	" " "	" " "	R-1-6-G30R2600 R-1-6-G30R2450 R-1-6-G30R2550	10/30/97 " "
17.	Helio Enterprise	H-250 H-295, HT-295, F-295 H-391, -391B, -395, -395A H-700 H-800	1A8 " " " "	CAR 3 " " " "	" " " " "	" " " " "	" " " " "	" " " " "	R-1-6-G30R257 R-1-6-G30Y300R340 R-1-6-G30Y300R340 R-1-6-G30R257 R-1-8-G30R265	10/30/97 " " " "
18.	Interceptor (Aero Commander) (Meyers)	200 200A, 200B 200D	3A18 " "	Car 3 " "	" " "	" " "	" " "	" " "	R-1-6-G30R260 R-1-6-G30R262 R-1-6-G30R270	10/30/97 " "
19.	Lake	See Revo.	-----	-----	-----	---	-----	-----	-----	6/3/94
20.	Luscombe	8 8A 8B 8C, 8D 8E 8F, T-8F	A-694 " " " " "	CAR 4a " " " " "	" " " " " "	" " " " " "	" " " " " "	" " " " " "	R-1-4-G30R190 R-1-4-G30R235 R-1-4-G30R255 R-1-4-G30R260 R-1-4-G30R257 R-1-4-G30R247	6/3/94 " " " " "

FAA Approved Model List (AML) SA5924NM  
for  
Electronics International RPM Instrument

Issue Date: February 17, 1993

Item	Aircraft Make	Aircraft Model	Original Type Certificate Number	Cert. Basis for Alt.	FAA Sealed Drawings		Installation Instructions		E.I. Instrument Model Number (See Note 1) ( ) = See Note	AML Amended Date
					Number	Rev No.	Number	Rev. No.		
----	-----	-----	-----	-----	TD0326921	A	OI 0517911	C	-----	-----
21.	Maule	M-4, M-4C, M-4S, M-4T M-4-180C, M-4-180S, M-4-180T M-4-210, -210C, -210S, -210T M-4-220, -220C, -220S, -220T M-5-180C M-5-210C, -220C M-5-235C M-5-210TC M-5-200 M-6-180 M-6-235 M-7-180 M-7-235 MX-7-180 MX-7-235	3A23 " " " " " " " " " " " " " " " " " " "	CAR 3 " " " " " " " " " " " " " " " " " " "	"	"	"	"	R-1-4-G30R270 R-1-6-G30R280 R-1-6-G30R280 R-1-6-G30R280 R-1-4-G30R270 R-1-6-G30R280 R-1-6-G30R240 R-1-4-G30R257 R-1-4-G30R270 R-1-4-G30R270 R-1-6-G30R240 R-1-6-G30R270 R-1-6-G30R240 R-1-6-G30R270 R-1-6-G30R240 R-1-4-G30R270 R-1-6-G30R240	8/5/94 "
22.	Mooney Aircraft Corp.	M20, A, B, C, D, G M20E, F M20J M20K M20L M20M M22	2A3 " " " " " " A6SW	Car 3 " " " " " " "	"	"	"	"	R-1-4-G30R200G225R270 R-1-4-G30R200G235R270 R-1-4-G30R270 R-1-6-G30R270 R-1-6-G30R234 R-1-6-G30R2575 R-1-6-G30R257	8/5/94 " " " " " " "
23.	Moravan	Zlin 526C Z-242L Z-143L	A30EU A76EU "	FAR 23 FAR 23 "	"	"	"	"	R-1-4-G30R270 R-1-4-G30R270 R-1-6-G30R240	10/30/97 " "
24.	Navion	See Thompson.	-----	-----	-----	---	-----	-----	-----	6/3/94



FAA Approved Model List (AML) SA5924NM  
for  
Electronics International RPM Instrument

Issue Date: February 17, 1993

Item	Aircraft Make	Aircraft Model	Original Type Certificate Number	Cert. Basis for Alt.	FAA Sealed Drawings		Installation Instructions		E.I. Instrument Model Number (See Note 1) ( ) = See Note	AML Amended Date
					Number	Rev No.	Number	Rev. No.		
----	-----	-----	-----	-----	TD0326921	A	OI 0517911	C	-----	-----
25.	Piper Aircraft Corp.	PA-12, -12S	A-797	CAR 3	"	"	"	"	R-1-4-G30R260	10/30/97
		PA-14	A-780	"	"	"	"	"	R-1-4-G30R280	"
		PA-15	A-800	CAR 3	"	"	"	"	R-1-4-G30R255	8/5/94
		PA-16	A-1A	"	"	"	"	"	R-1-4-G30Y260R280	"
		PA-17	A-805	"	"	"	"	"	R-1-4-G30R230	"
		PA-18	1A2	CAR 3	"	"	"	"	R-1-4-G30Y235R247	"
		PA-(18 or 18A or 18S) "125"	"	"	"	"	"	"	R-1-4-G30Y245R260	"
		PA-(18 or 18A or 18S) "135"	"	"	"	"	"	"	R-1-4-G30Y245R260	"
		PA-(18 or 18A or 18S) "150"	"	"	"	"	"	"	R-1-4-G30R270	"
		PA-19	"	"	"	"	"	"	R-1-4-G30R247	"
		PA-20, -20S, -20-115, -20S-115	1A4	"	"	"	"	"	R-1-4-G30Y245R260	"
		PA-20-135	"	"	"	"	"	"	R-1-4-G30Y245R260	"
		PA-22, -22-108, -22-135, -22S-135	1A6	"	"	"	"	"	R-1-4-G30Y245R260	"
		PA-22-150, -22S-150, -22S-160	"	"	"	"	"	"	R-1-4-G30R270	"
		PA-23	1A10	"	"	"	"	"	R-1-4-G30R270	"
		PA-23-160	"	"	"	"	"	"	R-1-4-G30R270	"
		PA-23-235	"	"	"	"	"	"	R-1-6-G30R257	"
		PA-E23-250	"	"	"	"	"	"	R-1-6-G30R257	"
		PA-24	1A15	"	"	"	"	"	R-1-4-G30R270	"
		PA-24-250	"	"	"	"	"	"	R-1-6-G30R257	"
		PA-24-260	"	"	"	"	"	"	R-1-6-G30R270	"
		PA-24-400	"	"	"	"	"	"	R-1-8-G30R265	"
		PA-25	2A8	"	"	"	"	"	R-1-6-G30R270	"
		PA-25-235	"	"	"	"	"	"	R-1-6-G30R257	"
		PA-25-260	"	"	"	"	"	"	R-1-6-G30R270	"
		PA-28-140	2A13	"	"	"	"	"	R-1-4-G30R270	"
		PA-28-150	"	"	"	"	"	"	R-1-4-G30R270	"
		PA-28-151	"	"	"	"	"	"	R-1-4-G30R270	"
		PA-(28 or 28S)-160	"	"	"	"	"	"	R-1-4-G30R270	"
		PA-28-161	"	"	"	"	"	"	R-1-4-G30R270	"
		PA-28-180, PA-28S-180	"	"	"	"	"	"	R-1-4-G30R270	"
		PA-28R-180	"	"	"	"	"	"	R-1-4-G30Y200G220R270	"
		PA-28-181	"	"	"	"	"	"	R-1-4-G30Y265R270	"
		PA-28R-200 w/ Hart. Prop.	"	"	"	"	"	"	R-1-4-G30Y210G235R270	"
		PA-28R-200 w/ McCauley Prop.	"	"	"	"	"	"	R-1-4-G30Y150G195R270	"
		PA-28-201T	"	"	"	"	"	"	R-1-6-G30Y200G220R257	"
		PA-28R-201	"	"	"	"	"	"	R-1-4-G30Y150G195R270	"
		PA-28RT-201 w/ S/N => 8018001	"	"	"	"	"	"	R-1-4-G30Y265R270	"
		PA-28RT-201 w/ S/N < 8018001	"	"	"	"	"	"	R-1-4-G30Y150G190R270	"
		PA-28R-201T, PA-28-235	"	"	"	"	"	"	R-1-6-G30Y200G220R257	"
		PA-28RT-201T	"	"	"	"	"	"	R-1-6-G30Y200G220R257	"
		PA-28-236	"	"	"	"	"	"	R-1-6-G30R240	"
		PA-30	A1EA	"	"	"	"	"	R-1-4-G30R270	"
		PA-31	A20SO	"	"	"	"	"	R-1-6-G30R257	"
		PA-31-325	"	"	"	"	"	"	R-1-6-G30R257	"
		PA-31-300	"	"	"	"	"	"	R-1-6-G30R270	"

FAA Approved Model List (AML) SA5924NM  
for  
Electronics International RPM Instrument

Issue Date: February 17, 1993

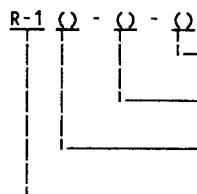
Item	Aircraft Make	Aircraft Model	Original Type Certificate Number	Cert. Basis for Alt.	FAA Sealed Drawings		Installation Instructions		E.I. Instrument Model Number (See Note 1) ( ) = See Note	AML Amended Date
					Number	Rev No.	Number	Rev. No.		
----	-----	-----	-----	-----	TD0326921	A	OI 0517911	C	-----	-----
25.	Piper Aircraft Corp. (Cont.)	PA-32-260, -32-300, -32R-300 PA-32S-300, -32RT-300 PA-32RT-300T PA-32-301T, -32R-301T PR-32-301, -32R-301 PA-34-200 PA-34-200T PA-34-220T PA-36-285 PA-36-300 PA-36-375 PA-38-112 PA-44-180 PA-44-180T PA-46-310P PA-46-350P	A3SO " " " " A7SO " " " A9SO " " " A18SO A19SO " A25SO "	CAR 3 " " " " FAR 23 " " " " " " " " " " " "	"	"	"	"	R-1-6-G30R270 R-1-6-G30R270 R-1-6-G30Y257R270 R-1-6-G30Y257R270 R-1-6-G30Y260R270 R-1-4-G30R270 R-1-6-G30R257 R-1-6-G30R260 R-1-6-G30R400 R-1-6-G30R270 R-1-8-G30R250 R-1-4-G30R260 R-1-4-G30R270 R-1-4-G30R257 R-1-6-G30R260 R-1-6-G30R250	8/5/94 " " " " " " " " " " " " " " " " " "
26.	Pitts	See Avait.	-----	-----	-----	---	-----	-----	-----	6/3/94
27.	Revo Inc. (Lake)	C-1, -2 LA-4, -4A, -4P LA-200 250	1A13 " " "	" " " "	" " " "	" " " "	" " " "	" " " "	R-1-4-G30R270 R-1-4-G30R270 R-1-4-G30Y200G236R270 R-1-6-G30R257	6/3/94 " " "
28.	Rockwell Int. Corp.	See Commander.	-----	-----	-----	---	-----	-----	-----	6/3/94
29.	Schweizer	G-164 w/W-670-6A	1A16	Car 8	"	"	"	"	R-1-7-G30R2075	10/30/97
30.	Sky	RC 2, 3, 4	A-769	Far 21	"	"	"	"	R-1-6-G30R250	6/3/94
31.	Socata Group (Aerospatiale)	TB9 TB10 TB20, TB21 TB-200	A51EU " " "	CAR 3 " " "	" " " "	" " " "	" " " "	" " " "	R-1-4-G30R270 R-1-4-G30Y200G226R270 R-1-6-G30R257 R-1-6-G30R270	6/3/94 " " "
32.	Stinson	See Univair.	-----	-----	-----	---	-----	-----	-----	6/3/94
33.	Swift (Globe)	GC-1A GC-1B	A-766 "	CAR 4a "	" "	" "	" "	" "	R-1-4-G30R2575 R-1-6-G30R2550	10/30/97 "
34.	Thompson, Jimmie, Enterprise (Navion)	A B C, D, E F, G H	A-782 " " " "	CAR 3 " " " "	" " " " "	" " " " "	" " " " "	" " " " "	R-1-4-G30R230 R-1-6-G30R300 R-1-6-G30R260 R-1-6-G30R262 R-1-6-G30R270	6/3/94 " " " "

FAA Approved Model List (AML) SA5924NM  
for  
Electronics International RPM Instrument

Issue Date: February 17, 1993

Item	Aircraft Make	Aircraft Model	Original Type Certificate Number	Cert. Basis for Alt.	FAA Sealed Drawings		Installation Instructions		E.I. Instrument Model Number (See Note 1) ( ) = See Note	AML Amended Date
					Number	Rev No.	Number	Rev. No.		
----	-----	-----	-----	-----	TD0326921	A	OI 0517911	C	-----	-----
35.	Univair Aircart Corp. (Stinson)	108, 108-1 108-2, -3, -5	A-767 "	CAR 3 "	"	"	"	"	R-1-4-G30R260 R-1-4-G30R280	6/3/94 "
36.	Zenair	CH2000	TA5CH	FAR 21	"	"	"	"	R-1-4-G30R280	10/30/97
--	-- End of List --	-----	-----	-----	-----	---	-----	-----	-----	-----

**Note 1:** Electronics International Instrument Model Designation System.



A combination of letters and numbers defining the green, yellow and red RPM Arcs that the analog portion of the instrument was programmed to.

A number corresponding to the number of cylinders the instrument was calibrated to.

A Letter here indicates any major changes in the hardware and/or software of the instrument.

Indicates the base model number of the instrument.


Example: R-1-4-G80Y210G235R260 indicates a 4 cylinder engine with the following markings and calibration: a green arc from 800 to 2090 RPM, a yellow arc from 2100 to 2340 RPM, a green arc from 2350 to 2590 and red from 2600 on up. Arc information is for reference only.

**Note (2):** For carbureted engines use the following placard, "Carb Ht Below 1900".

**Note (3):** For carbureted engines use the following placard, "Carb Ht Below 2000".

**Note (4):** For carbureted engines use the following placard, "Carb Ht Below 2100".

**Note (5):** For carbureted engines use the following placard, "Carb Ht Below 2200".

FAA Approved:   
Acting Manager, Seattle  
Aircraft Certification Office

Date: Nov. 24, 1997